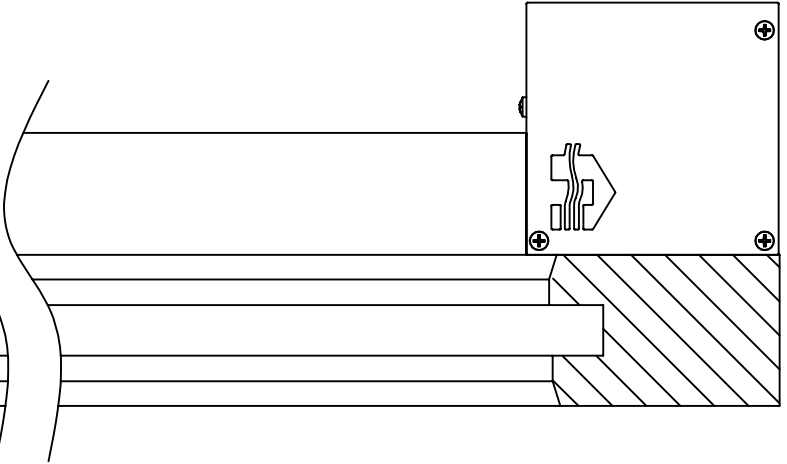
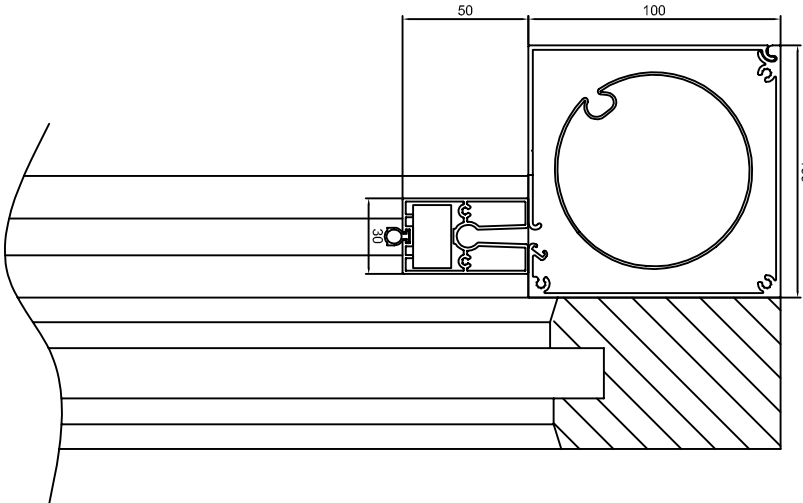


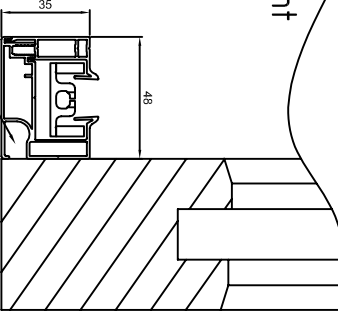
Zijaanzicht  
Vue de dessus  
Side view  
Seitenansicht



Doorsnede  
Section  
Cross section  
Section

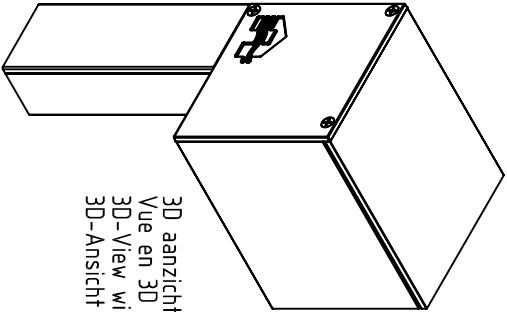


Bovenaanzicht  
Vue de côté  
Top view  
Obenansicht



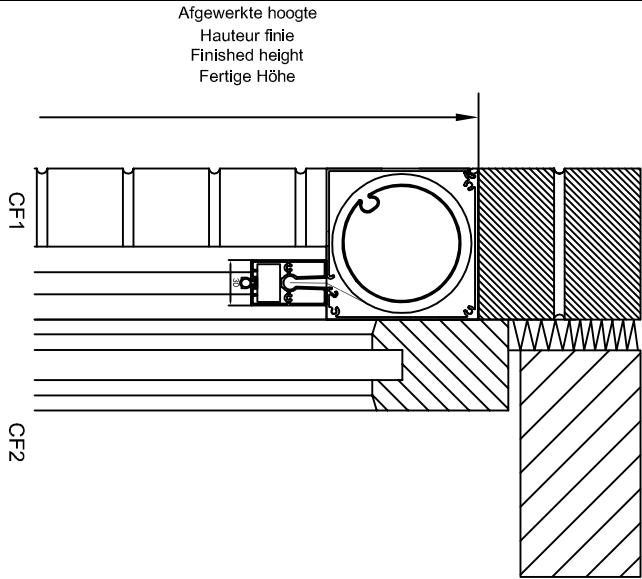
Seitenführung offen (S) Standard  
Open side channel (S) Standard  
Coulisse ouvert (S) Standard  
Open zijgeleider (S) Standard

Kabel  
Cable  
Cable  
Kabel



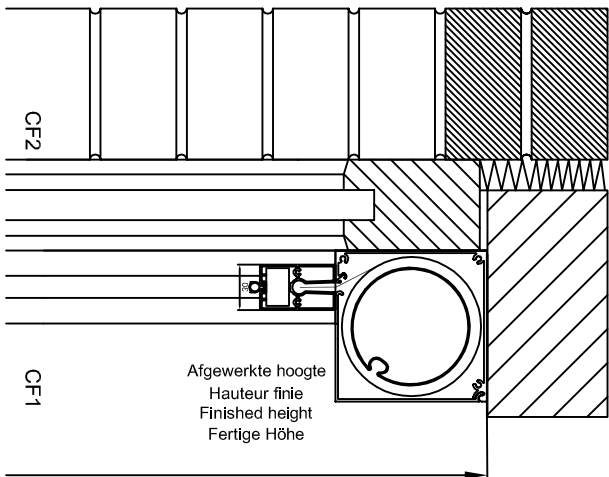
3D aanzicht met kast  
Vue en 3D avec caisson  
3D-View with box  
3D-Ansicht mit Kassette

Montagesituatie 1  
Montage 1  
Installation method 1  
Einbauweise 1

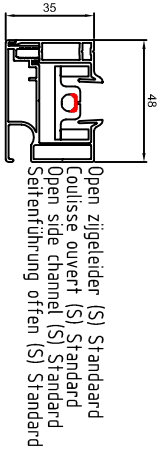


Vorbau: draussen vor dem Rahmen  
surface-mounted: outside, in front of the window  
avant-corps: devant le châssis à l'extérieur  
Voorbouw voor het raam buiten

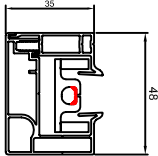
Montagesituatie 6  
Montage 6  
Installation method 6  
Einbauweise 6



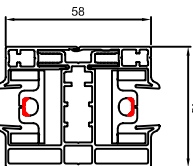
Vorbau: drinnen vor dem Rahmen  
surface-mounted: inside, in front of the window  
avant-corps: devant le châssis à l'intérieur  
Voorbouw voor het raam binnen



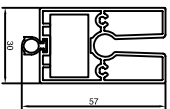
Open zijgeleider (S) Standard  
Coulisse ouvert (S) Standard  
Open side channel (S) Standard  
Seitenführung offen (S) Standard



Gesloten zijgeleider (G)  
Coulisse fermée (G)  
Closed side channel (G)  
Seitenführung geschlossen (G)



Koppel zijgeleider (K)  
Coulisse d'accolement (K)  
Coupling side channel (K)  
Koppel-Führung (K)



Onderlaât  
Barre de charge  
Bottom rail  
Die Endschiene